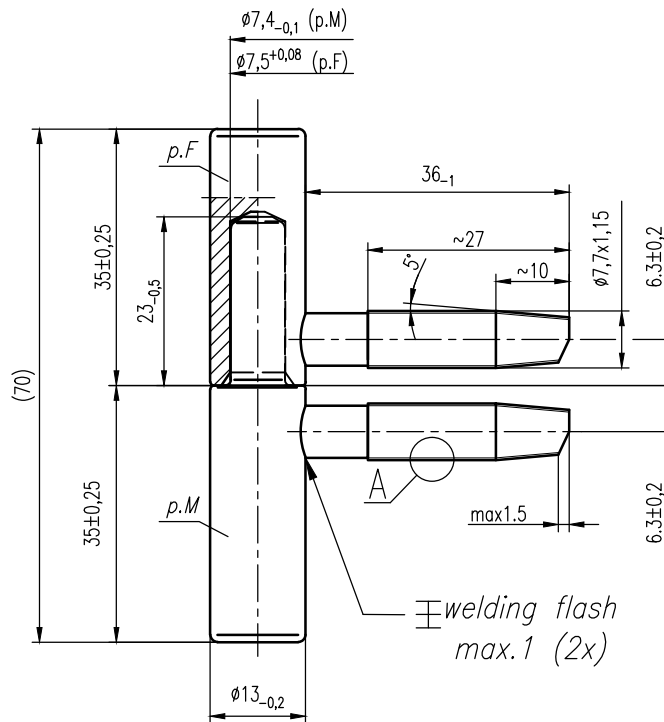
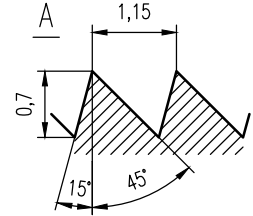


Angle tolerance					Length tolerance						
Arm length	>10	>10-50	>50-120	>120-400	Section length	>3	>3-6	>6-10	>10-30	>30-120	>120
Dimension without tolerance	$\pm 1'$	$\pm 30'$	$\pm 20'$	$\pm 10'$	Dimension without tolerance	$\pm 0,10$	$\pm 0,15$	$\pm 0,18$	$\pm 0,25$	$\pm 0,35$	$\pm 0,75$
Toler. for approx. dimension	$\pm 4'$	$\pm 2'$	$\pm 1'$	$\pm 30'$	Toler. for approx. dimension	$\pm 0,50$	$\pm 0,60$	$\pm 0,75$	$\pm 1,0$	$\pm 1,7$	$\pm 3,0$



<i>p.F</i>	70-01-00
<i>p.M</i>	70-02-00

				Ref: 70-00-00
				Weight: 0,0936 kg
				GEMOM <i>montti</i> <input type="checkbox"/> POL SOFT
P.O	25.06.2010	D.J	Creation of the plan	28 Allée du plateau 93250 Villemomble Tel. +33.1.49.35.08.54 Fax: +33.1.49.35.08.52
Index	Date	By	Plan changes	Pol-Soft Sp. z oo Dział Handlowy Tel. 67 263 22 46 Fax: +48 67 263 30 09
	Scale: 1:1	Range: Hinge	Material: Steel	Designed by: D.J
70-00-00				Verified by: D.J
<small>This document is the property of the enterprise GEMOM MONTTI/POLSOFT, IT CAN'T BE COMMUNICATED WITHOUT HIS AUTHORISATION</small>				